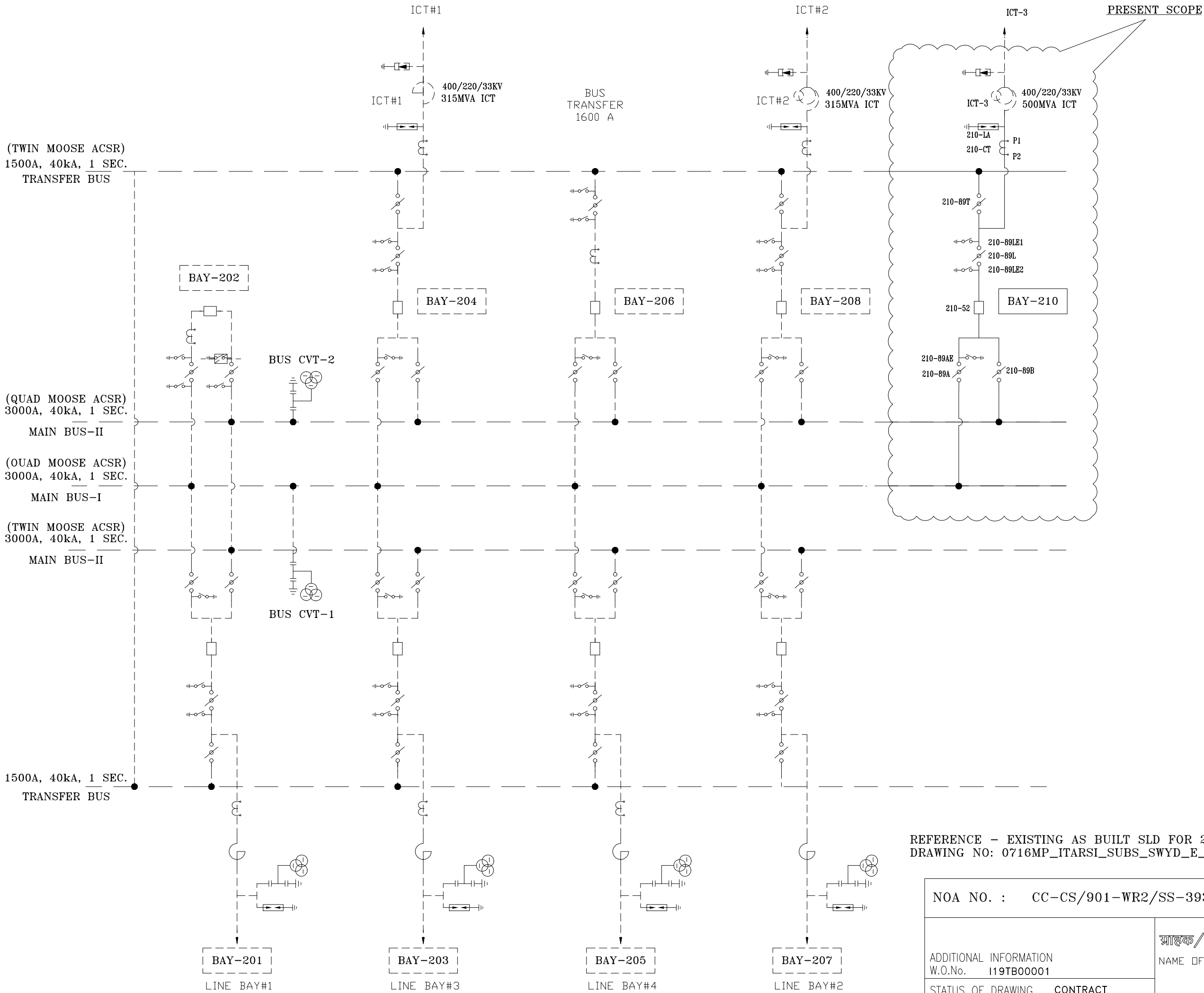



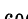

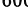

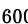
FIRST ANGLE PROJECTION (ALL DIMENSIONS ARE IN MM.)



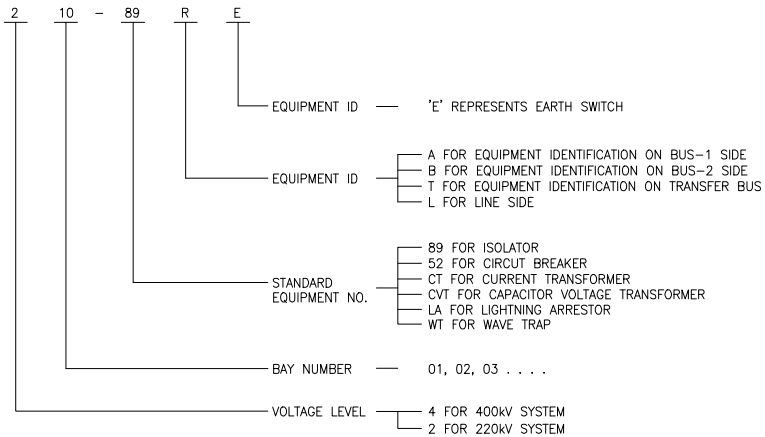
SYSTEM PARAMETERS:

S.NO.	DESCRIPTION	400KV	220KV
01	SYSTEM OPERATING VOLTAGE	400kV	220kV
02	MAXIMUM OPERATING VOLTAGE OF THE SYSTEM (rms)	420kV	245kV
03	RATED FREQUENCY	50Hz	50Hz
04	FULL WAVE IMPULSE WITHSTAND VOLTAGE (1.2/50 MICROSES)	1550kVp	1050kVp
05	SWITCHING IMPULSE WITHSTAND VOLTAGE (250/2500 MICRO SEC.) DRY AND WRT	1050kVp	--
06	ONE MINUTE POWER FREQUENCY DRY WITHSTAND VOLTAGE (rms)	630kV	--
07	ONE MINUTE POWER FREQUENCY DRY AND WET WITHSTAND VOLTAGE (rms)	--	460kV
08	CORONA EXTINCTION VOLTAGE	320kV	--
09	MAX. RADIO INTERFERENCE VOLTAGE FOR FREQUENCY BETWEEN 0.5 MHz AND 2 MHz	1000µV AT 266kV rms	1000µV AT 156kV rms
10	MINIMUM CREEPAGE DISTANCE-FOR EQUIPMENT OTHER THAN INSULATOR STRING	10500mm	6125mm
11	SYSTEM FAULT LEVEL	40KA for 1 sec	40KA for 1 sec

BILL OF QUANTITIES-220KV:

S.NO.	SYMBOL	LEGEND	DESCRIPTION	QTY. (NOS)
01		52	220KV, 1600A, 3-PH CIRCUIT BREAKER	1
02		89	220KV, 1600A, 3-PH, HORIZONTAL DOUBLE BREAK ISOLATOR WITH 2 E/S	1
03		89	220KV, 1600A, 3-PH, HORIZONTAL DOUBLE BREAK ISOLATOR WITH 1 E/S	1
04		89	220KV, 1600A, 3-PH, HORIZONTAL DOUBLE BREAK ISOLATOR (TANDEM TYPE) WITHOUT E/S	2
05		CT	220KV, 1600A, 3-PH CURRENT TRANSFORMER WITH 120% EXTENDED CURRENT RATING	3
06		LA	216KV, 1-PH, SURGE ARRESTER	3

220KV EQUIPMENT IDENTIFICATION:-



REFERENCE - EXISTING AS BUILT SLD FOR 220KV STATION ITARSI,
DRAWING NO: 0716MP_ITARSI_SUBS_SWYD_E_DWG_41_001 SHEET 2 OF 2

NOA NO. : CC-CS/901-WR2/SS-3931/3/G3/NOA-I/8864 & 8865 DT. 29.07.19

ADDITIONAL INFORMATION W.O.No. I19TB00001			ग्राहक/परियोजना का नाम POWER GRID CORPORATION OF INDIA LIMITED NAME OF CUSTOMER/PROJECT Substation Package--SS19 for extension of (i) 765kV Solapur S/S; (ii) 765kV Aurangabad S/S; (iii) 765kV Wardha S/S; (iv) 400kV Khandwa S/S; (v) 400kV Rajgarh S/S; (vi) 400kV Champa S/S; (vii) 400/220kV Itarsi S/S & (viii) 400/220kV Jabalpur Substation under WRSS-20.			
STATUS OF DRAWING CONTRACT						
DISTRIBUTION OF PRINTS			<div style="display: flex; align-items: center;"> <div> भारत हेवी इलेक्ट्रिकल्स लिमिटेड ट्रांसमिशन परियोजना विभाग BHARAT HEAVY ELECTRICALS LTD. TRANSMISSION PROJECTS DIVISION </div> </div>			
			खनगा DRAWING	नाम /NAME DS	हस्ता./SIGN. 	दि./DATE 17.09.19
			जेफ CHECKED	JK		17.09.19
			स्वीकृत APPROVED	SKS		17.09.19
REV.	DATE	ALTERED CHECKED APPROVED	विभाग DEPT. TBEM कोड CODE 422	 अनुपात / SCALE NTS	कार्ड कोड CARD CODE	
ZONE			शीर्षक/TITLE SINGLE LINE DIAGRAM FOR EXTN. OF 220 KV ITARSI S/S			ड्राईंग.क./DRAWING NO. TB-408-510-I11
						पुनः./REV. 00
			पृष्ठ क./SHEET No.01			अगला पृष्ठ/NEXT SHEET -

SIZE-A2